

Industrial Connector(Housing)

RoHS

CZ-CH-CA and MZ-MH-MA enclosures size "44.27" standard version

inserts:

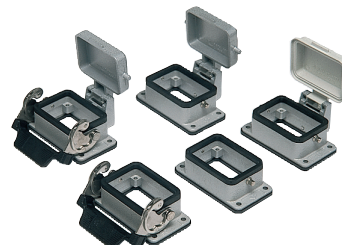
CDD	24 poles + ⊕
CQE	10 poles + ⊕
CC	6 poles + ⊕
CN, CS	6 poles + ⊕
CCE	6 poles + ⊕
CNE, CSE	6 poles + ⊕
CTE, CTSE	16 poles + ⊕
MIXO	2 modules

insert centre distance: **44x27 mm**

bulkhead mounting housings with single stainless steel lever

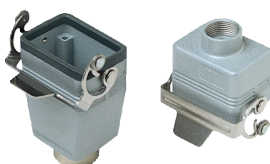


bulkhead mounting housings with single lever or two pegs

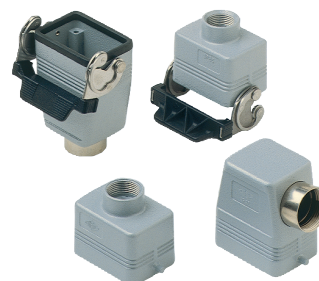


Description	part No.	part No.
with lever	CZI 06 L	CHI 06 L
with lever and cover	CZI 06 LS	CHI 06 LS
with pegs ¹⁾		CHI 06 LC
with pegs and aluminium cover ¹⁾		CHI 06 LCS
with pegs and plastic cover ¹⁾		CHI 06 LCP

hoods with single stainless steel lever



hoods with single lever or two pegs



inserts:

CDD	24 poles + ⊕
CQE	10 poles + ⊕
CC	6 poles + ⊕
CN, CS	6 poles + ⊕
CCE	6 poles + ⊕
CNE, CSE	6 poles + ⊕
MIXO	3 modules

insert centre distance: **44x27 mm**

Description	part No.	entry Pg	part No.	entry M	part No.	entry Pg	part No.	entry M
with lever, without gasket, side entry ¹⁾	CZO 06 LX16	16	MZO 06 LX20	20	CHO 06 LX16	16	MHO 06 LX20	20
with lever, without gasket, side entry ¹⁾			MZO 06 LX25	25			MHO 06 LX25	25
with lever, without gasket, top entry ¹⁾	CZV 06 LX16	16	MZV 06 LX20	20	CHV 06 LX16	16	MHO 06 LX20	20
with lever, without gasket, top entry ¹⁾			MZV 06 LX25	25			MHO 06 LX25	25
with lever, top entry	CZV 06 LG	16	MZV 06 LG25	25	CHV 06 LG	16	MHV 06 LG25	25
with lever, top entry, high construction	CZAV 06 LG	21	MZAV 06 LG25	25	CAV 06 LG21	21	MHO 06 LG25	25
with lever, top entry, high construction	CZAV 06 LG29	29	MZAV 06 LG32	32	CHV 06 LG29	29	MAV 06 LG32	32
with lever, top entry, high construction, without adaptor			MZV 06 LG25	25			MFV 06 LG25	25
with lever, top entry, high construction, without adaptor			MZV 06 LG32	32			MFV 06 LG32	32
with pegs, side entry					CHO 06 L13	13.5	MHO 06 L20	20
with pegs, side entry					CHO 06 L16	16	MHO 06 L25	25
with pegs, side entry, high construction					CAO 06 L21	21	MAO 06 L25	25
with pegs, side entry, high construction					CAO 06 L29	29	MAO 06 L32	32
with pegs, side entry, high construction, without adaptor							MFO 06 L25	25
with pegs, side entry, high construction, without adaptor							MFO 06 L32	32
with lever, top entry					CHV 06 L13	13.5	MHV 06 L20	20
with lever, top entry					CHV 06 L16	16	MHV 06 L25	25
with lever, top entry, high construction					CAV 06 L21	21	MAV 06 L25	25
with lever, top entry, high construction					CAV 06 L29	29	MAV 06 L32	32
with pegs, top entry, high construction, without adaptor							MFV 06 L25	25
with pegs, top entry, high construction, without adaptor							MFV 06 L32	32

Industrial Connector(Housing)

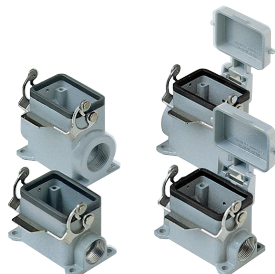
size "44.27" standard version **CZ-CH-CA and MZ-MH-MA enclosures**

inserts:

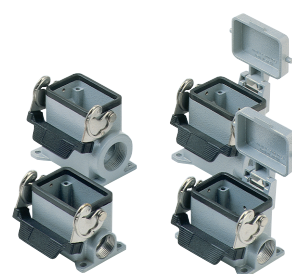
CDD 24 poles + ⊕
CQE 10 poles + ⊕
CC 6 poles + ⊕
CN, CS 6 poles + ⊕
CCE 6 poles + ⊕
CNE, CSE 6 poles + ⊕
MIXO 2 modules

insert centre distance: **44x27 mm**

surface mounting housings
with single stainless steel lever



surface mounting housings
with single lever



Description
with lever
with lever
with lever, high construction
with lever, high construction
with lever, high construction
with lever, high construction
with lever and cover
with lever and cover
with lever and cover, high construction
with lever and cover, high construction
with lever and cover, high construction
with lever and cover, high construction

part No.	entry Pg	part No.	entry M
CZP 06 L	16	MZP 06 L20	20
CZP 06 L2	16X2	MZP 06 L220	20X2
CZAP 06 L	21	MZAP 06 L32	32
CZAP 06 L2	21X2	MZAP 06 L232	32X2
CZAP 06 L29	29	MZAP 06 L40	40
CZAP 06 L229	29X2	MZAP 06 L240	40X2
CZP 06 LS	16	MZP 06 LS20	20
CZP 06 LS2	16X2	MZP 06 LS220	20X2
CZAP 06 LS	21	MZAP 06 LS32	32
CZAP 06 LS2	21X2	MZAP 06 LS232	32X2
CZAP 06 LS29	29	MZAP 06 LS40	40
CZAP 06 LS229	29X2	MZAP 06 LS240	40X22

part No.	entry Pg	part No.	entry M
CHP 06 L	16	MHP 06 L20	20
CHP 06 L2	16X2	MHP 06 L220	20X2
CAP 06 L	21	MAP 06 L32	32
CAP 06 L2	21X2	MAP 06 L232	32X2
CAP 06 L29	29	MAP 06 L40	40
CAP 06 L229	29X2	MAP 06 L240	40X2
CHP 06 LS	16	MHP 06 LS20	20
CHP 06 LS2	16X2	MHP 06 LS220	20X2
CAP 06 LS	21	MZAP 06 LS32	32
CAP 06 LS2	21X2	MZAP 06 LS232	32X2
CAP 06 LS29	29	MZAP 06 LS40	40
CAP 06 LS229	29X2	MZAP 06 LS240	40X22

